

New England Camera Club Council

2013 Digital Projected Image Competition

RULES, GUIDELINES AND PROCEDURES

PLEASE NOTE that the slide competition has been discontinued. Only digital images may be submitted for the coming year. Digital images may have originated as a slide. Please read these rules carefully.

The Digital Projected Image Competition is open to anyone attending the Conference. Digital makers may enter **ONE** open and **ONE** nature to be judged together in one competition. **Digital image files** must be submitted in advance and may be submitted via email or on CD. By submitting an image, you are certifying that you are the copyright holder of the image and you acknowledge that NECCC will assume no liability for any image submitted.

To enter, do the following:

Digital entries: You must email your entries online by July 7, 2013 or a \$20 late fee will be assessed. Please note that there is no entry form to fill out.

Digital images **must be sent by email to necccdigitalcomp@gmail.com (please note the new email address – the Verizon email address no longer exists)** and must be received by Sunday, July 7, 2013. Thereafter, submissions may be made by CD at the conference at the Hospitality Table area between noon and 4:00p.m. on Friday. **However, submissions made after Sunday, July 7 will be deemed late submissions and as such WILL BE CHARGED A LATE FEE OF \$20 PER PERSON. If you will not get to the conference until Friday evening or Saturday, you must submit your entry via email prior to July 7.** A Status List of all entries received will be published on the NECCC website. Entrants can check it to see if their images have been received in good order. The Status List will be updated at least weekly and will be posted until the judging takes place. A maximum of 2 images may be submitted per entrant. The images must be in JPEG format (see below for formatting and naming instructions). They can be sent one at a time or in groups of two, depending on your Internet Service Provider and Modem Speed. Your email should include a **message stating how many images are attached, and should include your full name, title of your images and your camera club affiliation** if you have one (although one is not required to enter the competition).

SUBMITTED IMAGES. As a Conference attendee, you may submit one Open image and one Nature image file. PSA rules on Nature images will be used. Entries must originate as photographs (image/captures of objects via light sensitivity) made by the entrant on photographic emulsion or acquired digitally. By virtue of submitting an entry, the entrant certifies the work as his/her own.

Three qualified judges will select the winning images. Judging of the competition will follow the same general rules used in the NECCC slide competition. **Scoring will be from 9-30 points.**

In the Open category, a Best of Show, Best Creative, Best Landscape (the Edmund A. Woodle Award), Best Portrait (male or female), and Roslyn MacNish Memorial for Best Photojournalism.

In the Nature category, a Best of Show, Best Wildlife, Best Bird (the Robert Strindberg Ornithology Award), Best Mammal in Action, and Best Botany.

In addition, the Yankee Photographic Society will give three (3) judges' choice medals in the Open category, and the Connecticut Association of Photographers will give three (3) judges' choice medals in the Nature category.

Images may be altered, either electronically or otherwise, by the maker (except as prohibited in the Nature Rules, see below) and artwork or computer graphics **created by the entrant** may be incorporated if the photographic content predominates. All final work must be in electronic file.

Report cards can be picked up on Sunday between 8:00 a.m. and 11:30 a.m. at the image submission area. Winning entrants should plan to **pick up medals at the NECCC Competition Awards on Sunday, at 11:30 a.m. in CC 163.**

Nature. Images entered in the digital projected image nature competition must conform to PSA's nature definition. Eligible subjects include trees, wildflowers, weeds, grasses, fungi, ferns, mosses, animals or birds (except domesticated), reptiles, insects, fossils, weather, land/seascapes (without boats or other human evidence), geological formations, etc. Ineligible subjects include cultivated plants or flowers, domestic animals (dogs, cows, etc), scenes that show human artifacts (fences, buildings, telephone wires, etc.), mounted specimens, museum habitats or groups, or subjects no longer alive.

According to PSA rules on Nature category: "Nature photography is restricted to the use of the photographic process to depict observations from all branches of natural history, except anthropology and archeology, in such a fashion that a well informed person will be able to identify the subject material and to certify as to its honest presentation. The story telling value of a photograph must be weighed more than the pictorial quality. Human elements shall not be present, except on the rare occasion where those human elements enhance the nature story. The presence of scientific bands on wild animals is acceptable. Photographs of artificially produced hybrid plants or animals, mounted specimens, or obviously set arrangements, are ineligible, as is any form of manipulation, manual or digital, that alters the truth of the photographic statement. Authentic Wildlife is defined as one or more organisms living free and unrestrained in a natural or adopted habitat. Therefore, photographs of zoo animals or photographs of game farm animals regardless of the game farm's use of wildlife terminology are not considered wildlife images.

Makers may perform any **enhancements and modifications that improve the presentation of the image that could have been done at the time the image was taken but that does not change the truth of the original nature story.** Cropping and horizontal flipping (equivalent to reversing a slide) are acceptable modifications. **Addition of elements, removal of elements other than by cropping, combining elements from separate images, rearranging elements or cloning elements ARE NOT ACCEPTABLE.+**

Open. "Digital Realism" includes enhancements and modifications allowed to improve a presentation but without changing the taken truth of the original exposure. "Digital Realism" allows adjustments to exposure, contrast, sharpness, acceptable cropping, altering between horizontal and vertical, enhancement of overall color (like you do when you choose a film) but not change the color of sky, for example. Removal of elements, such as telephone wires, is permissible. "Digital Art" includes digital images that exceed the definition of "Digital Realism".

DEADLINE FOR ENTRY. Digital image files must be submitted in advance and may be submitted via email or on CD. Email entries **must** be sent to necccdigitalcomp@gmail.com (please note the new email address – the Verizon email address no longer exists). They may be submitted up to and including Sunday, July 7, 2013. Thereafter, submissions may be made by CD at the conference in the Hospitality Table area between noon and 4:00 pm on Friday. However, submissions on Friday will be considered late and **THERE WILL BE A LATE ENTRANCE FEE OF \$20 PER PERSON** for these submissions. **If you will not get to the conference until Friday evening or Saturday, you must submit your entry via email.** Sorry, NO images for any competition can be accepted after the deadline. Images that do not conform to the following specifications and dates are subject to possible disqualification from competition.

AFTER THE COMPETITION

Report card pick-up will be on Sunday 8 a.m. to 11:30 a.m. across from the Hospitality Table. **Winning entries will be shown at the NECCC Competition Awards on Sunday, at 11:30 a.m. in CC 163.** Winning entrants should plan to **pick up medals at that time.**

PREPARING IMAGES FOR ENTRY:

Digital images: The equipment used for judging this competition uses 1024 X 768.

The image must fit into this window (1024 X 768).

Horizontals must have a width of 1024 or smaller; verticals must have a height of 768 or smaller.

Smaller images are acceptable.

The images will be projected as received.

Sizing your images: Use this procedure for scanned slides or prints, or images from a digital camera.

In Photoshop or your favorite Image editing software:

1. Crop your image for best composition.
2. Choose: IMAGE>IMAGE SIZE
 - a. Make sure constrain proportions is checked
 - b. Make sure resample image is checked
 - c. For Horizontal composition photographs:
Set width to 1024 pixels or smaller.
Height will automatically adjust to the correct proportion (approx. 768).
 - d. Square composition images are acceptable as long as they fit into this 1024 X 768 window.
 - e. For Vertical composition photographs:
Set height to 768 pixels or smaller.
Width will automatically adjust to correct proportion (approx. 511).
 - f. **Resolution should be 100.** Winning images are reproduced in the *NECCC Bulletin* and therefore need the large resolution size.

Saving and naming your images: After you size your files, you must name and save them, using the following method:

Choose: FILE>SAVE AS (Use this procedure for each of your images)

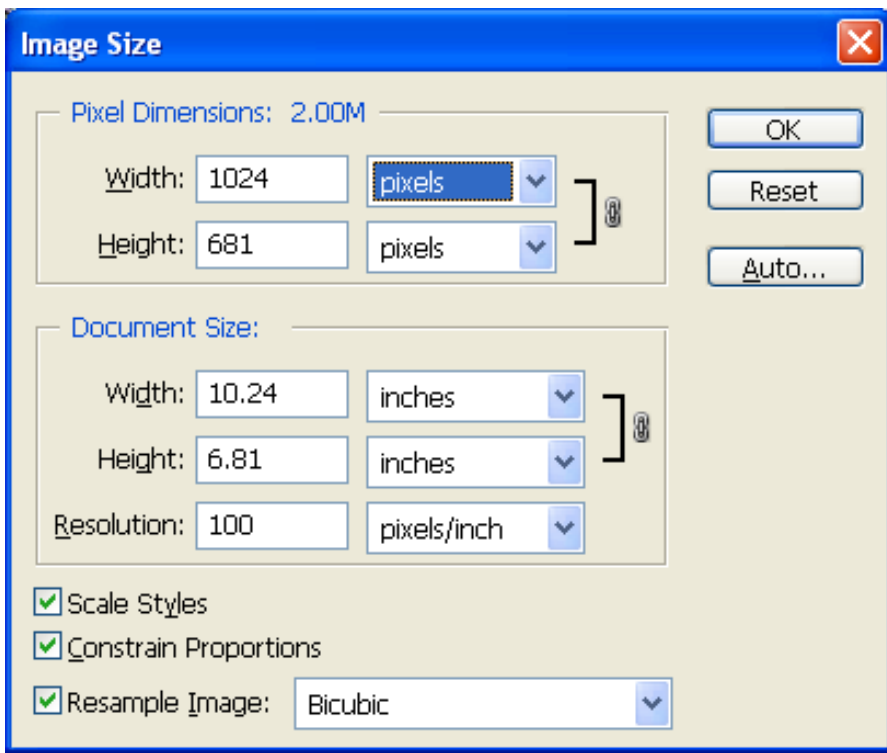
Your electronic file name will consist of the Category followed by your name and the title of your image. Please separate each piece of information with a dollar sign \$. For example:

N\$Stanley, Pam\$Bull Elephant.jpg

O\$Stanley, Pam\$Pemaquid Light.jpg

Email your submissions to necccdigitalcomp@gmail.com (**please note the new email address – the Verizon email address no longer exists**) by July 7. You will get a confirming reply email within a day or two, so you should inquire about your entry if you do not receive one. No entry form is needed, but **please be sure your name and the image title** is on the image files and **indicate your camera club affiliation**.

Thanks for competing and good luck to everyone!!



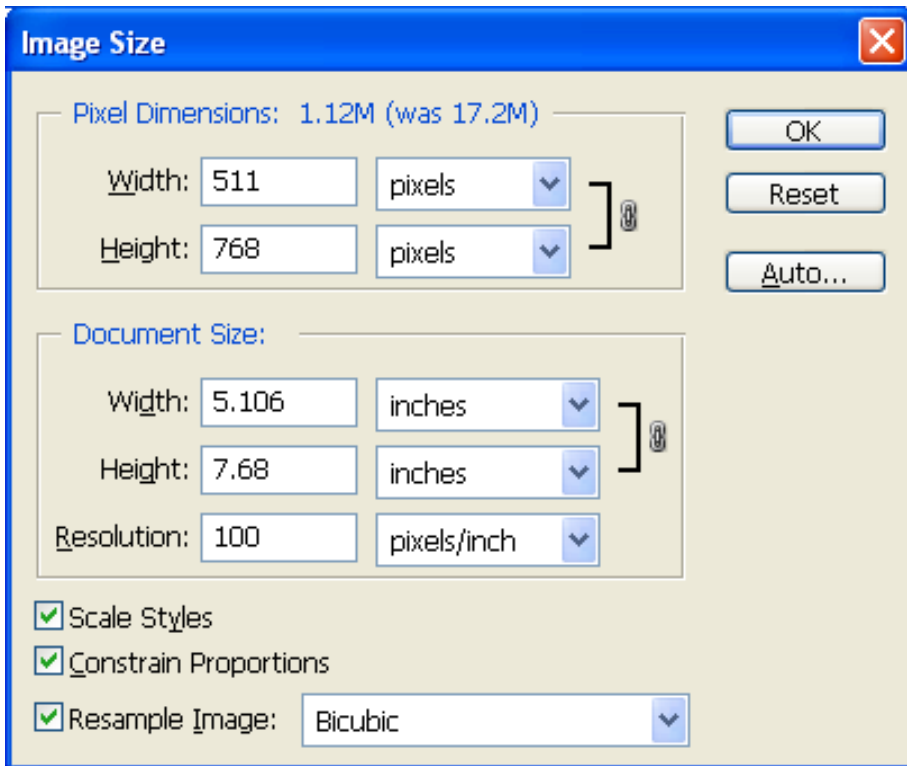
Set
Resolution
first!!!

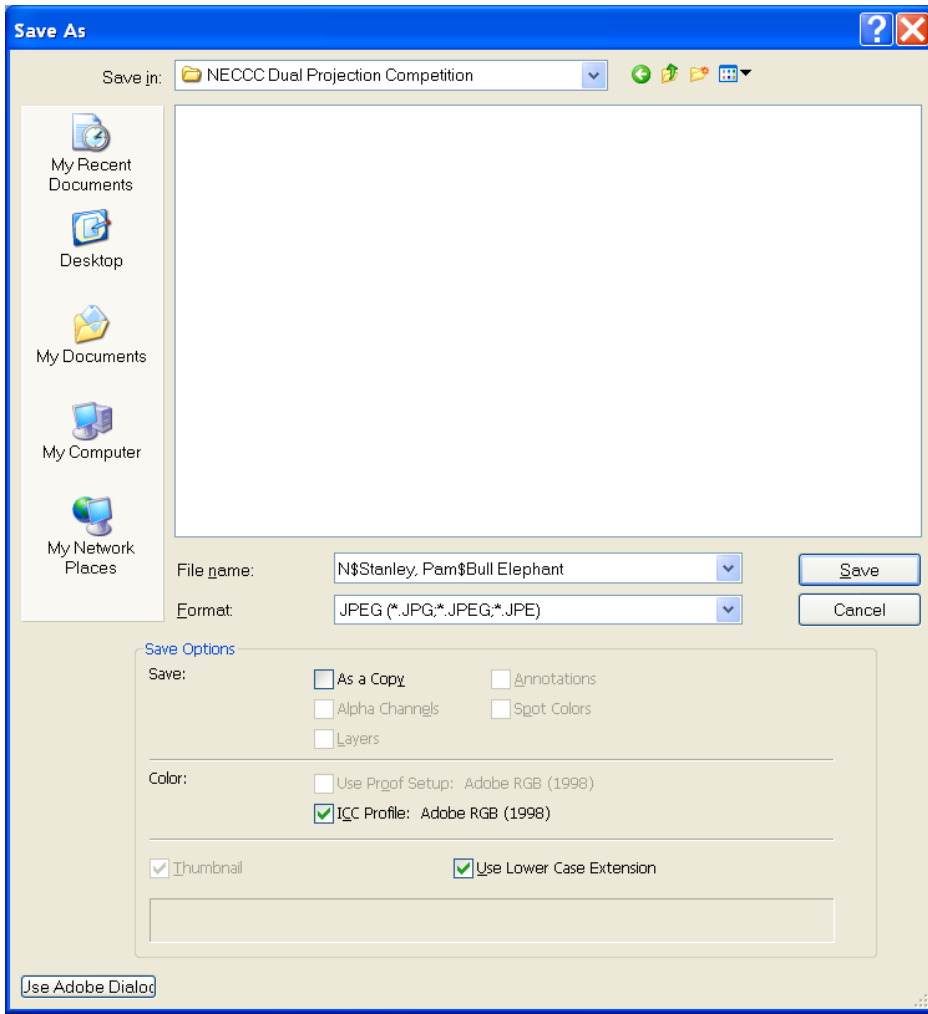
Then set
Width at
1024 for
Horizontals

or

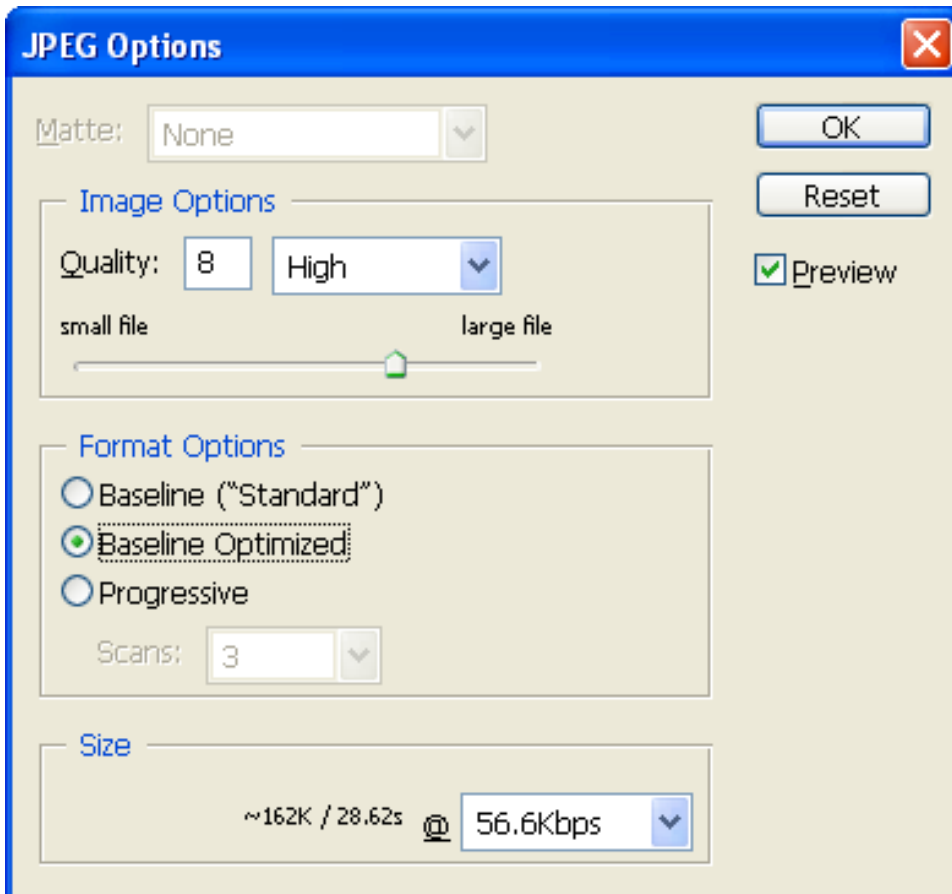
set Height
at 768 for
Verticals

(As long as
Constrain
Proportions is
checked, you
should only have
to set your width
OR your height.)





Save file in the format shown as **Category\$ LastName, FirstName\$ Title.jpg**
Be sure it is a JPEG file



Using 7-8 for Quality